

Product Range Extension: Vacuum Breaker CVU15 in complete stainless steel construction

Starting
from
February 1,
2014

Starting from February 1, 2014 MIYAWAKI will include a new Vacuum Breaker model CVU15 into its product range – in complete stainless steel construction.

Features

The model CVU15 is designed for steam or liquid systems, where the creation of a vacuum would be harmful to the system, prevent flow or drainage and reduce the system's performance and efficiency.

Technical Specification

Model CVU15

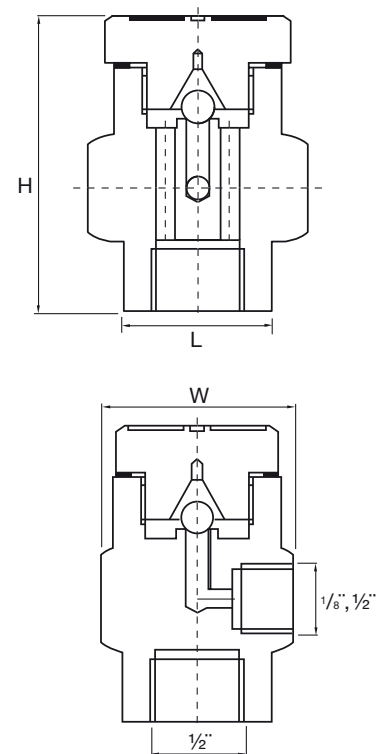
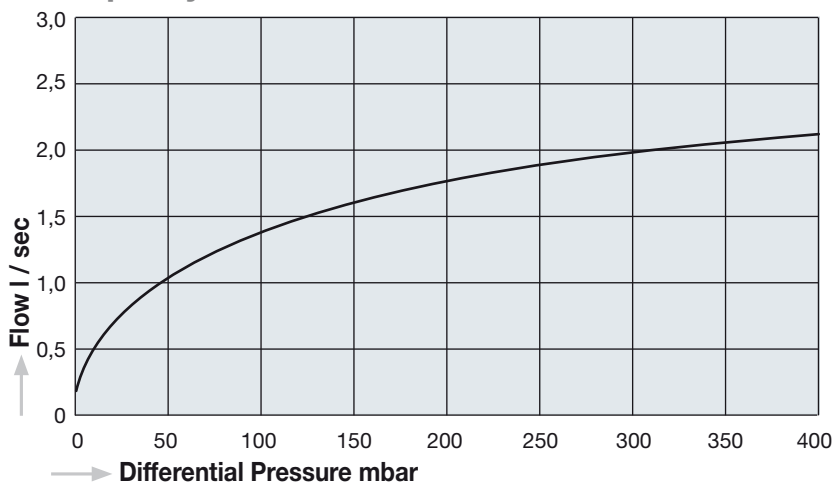
System connection:	1/2" screwed (BSP, BSPT, NPT)
Air inlet connection:	1/2", 1/8" screwed (BSP, BSPT, NPT)
Maximum allowable pressure PMA:	21 barg (2,1 MPa / 305 psig)
Maximum operating pressure PMO:	21 barg (2,1 MPa / 305 psig)
Maximum allowable temperature TMA:	450°C (842°F)
Maximum operating temperature TMO:	450°C (842°F)
Opening pressure:	5 mbarg (0.0725 psig)
Hydrostatic test pressure:	42 barg (4,2 MPa, 609 psig)
Body material:	AISI 304 (DIN 1.4301)
Weight	0,375 kg



Dimensions (mm)

	1/2" x 1/2"	1/2" x 1/8"
L	32	32
H	70	55
W	41	41

Air Capacity Chart



Issued: January 2014



MIYAWAKI Inc.
2-1-30, Tagawakita, Yodogawa-ku, Osaka 532-0021
JAPON
Tel.: + 81 - 6 - 6302 - 5549, Fax: + 81 - 6 - 6302 - 5595
E-Mail: export@miyawaki-inc.co.jp
Website: www.miyawaki.net



MIYAWAKI GmbH
Birnbaumsmühle 65, 15234 Frankfurt (Oder)
GERMANY
Tel.: 49-335-4007 00 97, Fax.: 49-335-400 01 22
e-mail: info@miyawaki.de
website: www.miyawaki.de