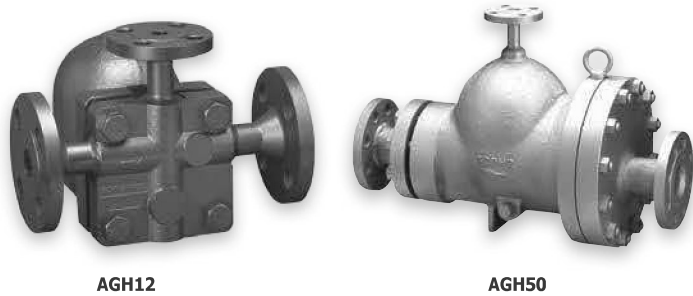


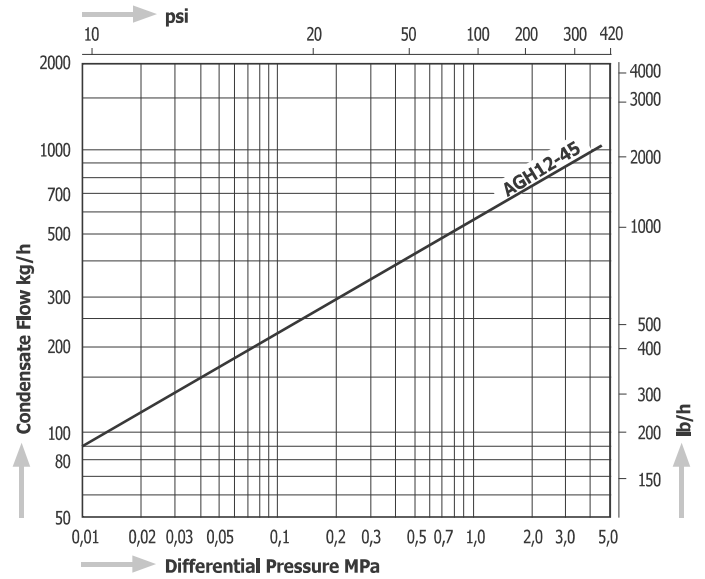
AGH12, AGH50



AGH12

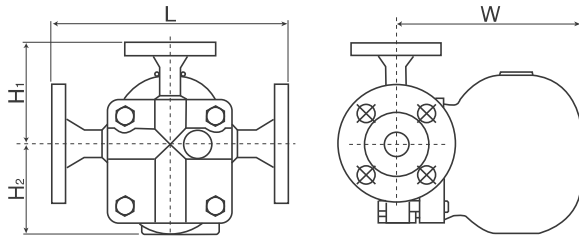
AGH50

Capacity Chart AGH12-45

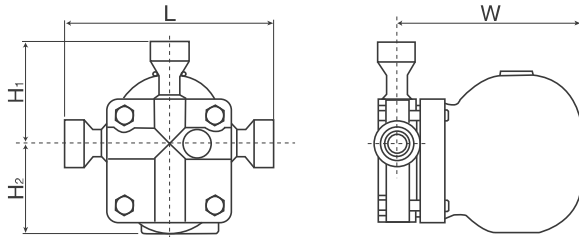


Dimensions

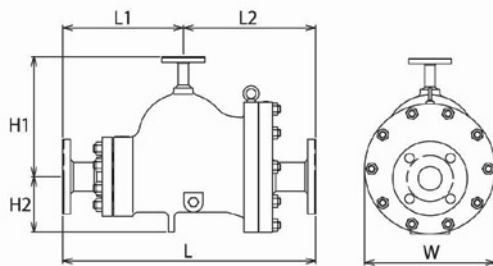
AGH12-45F



AGH12-45W



AGH50



Capacity Chart AGH50

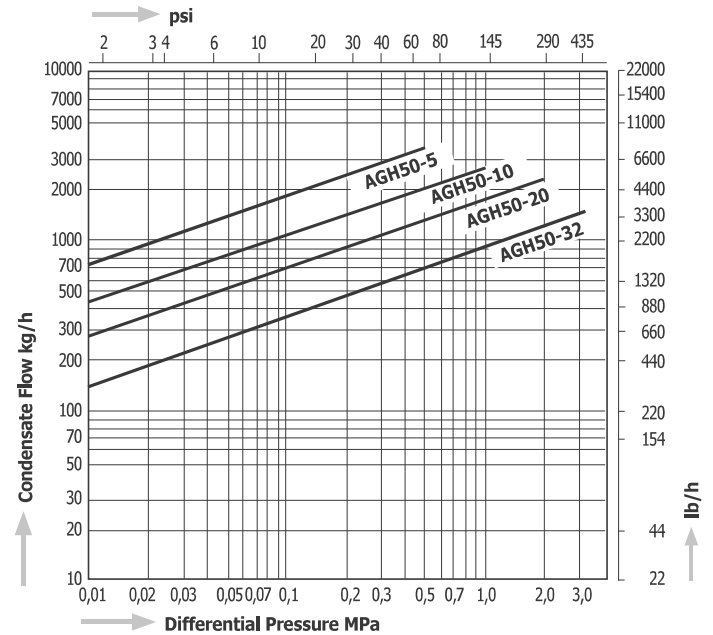


Table 1: Dimensions L and Weight

Model	Size	ASME Class* (#150, #300)							
		Dimensions* (mm)			Dimensions* (in)			Weight*	
		L	L1	L2	L	L1	L2	kg	lb
AGH50	2"	525	250	275	20.7	9.8	10.8	64	140.8
	2½"	550	265	285	21.7	10.4	11.2	68	149.6
	3"	555		290	21.9	10.4	11.4	72	158.4
	4"	590	285	305	23.2	11.2	12.0	73 / 82	160.6 / 180.4

Model	Connections	Size	Max. Operating Pressure, PMO		Max. Differential Pressure, PMX		Max. Operating Temperature, TMO		Dimensions* (mm)					Dimensions* (in)					Body Material	Weight*	
			MPa	psig	MPa	psig	°C	°F	L	L1	L2	H1	H2	W	L	L1	L2	H1		H2	W
AGH12 - 45F	Flanged JIS, ASME, DIN	½" - 1"	4,5	652	4,5	652	425	800	250	107	95	195	9.8	4.2	3.7	7.7	Cast Steel SCPH2	17	37.4		
AGH12 - 45W	Socket Weld JIS, ASME, DIN																	12	26.4		
AGH50 -	Flanged JIS, ASME, DIN	2" - 4"	3,2	464	0,5	72.5	400	752	Table 1	250	115	270	Table 1	9.8	4.5	10.6	Cast Steel SCPH2	Table 1			
					1,0	145															
					2,0	290															
					3,2	464															

* Depending on the flange standard the face-to-face dimensions and the weight may differ.